



# WEEP HOLE PRODUCT SPECIFICATION

## 2.5”dia. ABS

### 1.0 SCOPE

This Product Specification covers the performance requirements for earth retaining structures pertaining to weep holes and dewatering.

### 2.0 PRODUCT DESCRIPTION

#### 2.1 Product Name and Part Number

Product Name

Part Number

JET FILTER ABS; AVAILABLE IN GRAY, SLATE, CLAY, BROWN

JF2.5ABS

### 3.0 MATERIALS

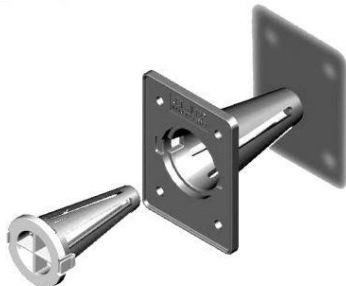
#### 3.1 Flame Retardent Polycarbonate/ Acrylonitrile-Butadiene-Styrene

#### 3.2 Housing and Components are U/V Resistance

#### 3.3 Filter Media

1.Mirafi® FW300 geotextile is composed of high-tenacity monofilament polypropylene yarns, which are woven into a stable network such that the yarns retain their relative position.

CBR Puncture Strength	ASTM D6241	lbs (N)	1250 (5563)
Apparent Opening Size (AOS) <sup>1</sup>	ASTM D4751	U.S. Sieve (mm)	30 (0.60)
Percent Open Area	COE-02215	%	8
Permittivity	ASTM D4491	sec-1	1.5
Permeability	ASTM D4491	cm/sec	0.13
Flow Rate	ASTM D4491	(gal/min/ft <sup>2</sup> ) l/min/m <sup>2</sup>	115 (4685)



US PAT #:

**7,615,148**

JET FILTER SYSTEM LLC  
107 NW 1<sup>ST</sup> STREET  
CASEY ILLINOIS 62420  
800-475-2029

TITLE: **2.5”DIA. ABS PRODUCT SPECIFICATION**

JET Filter components are 100% made in the USA and are compliant with the Buy American Clause.

PART#:

**JF2.5ABS**