



WEEP HOLE PRODUCT SPECIFICATION

3”dia. 316/SS

1.0 SCOPE

This Product Specification covers the performance requirements for earth retaining structures pertaining to weep holes and dewatering.

2.0 PRODUCT DESCRIPTION

2.1 Product Name and Part Number

Product Name

JET FILTER SS; 316 STAINLESS STEEL

Part Number

JF3SS

3.0 MATERIALS

3.1 Flame Retardent Polycarbonate/ Acrylonitrile-Butadiene-Styrene (Filter Cartridge Only) U/V Resistance

3.2 Housing 316 Stainless Steel

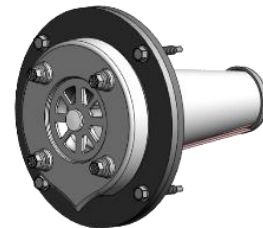
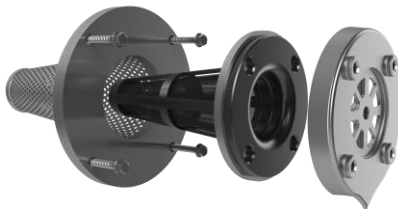
3.3 Cartridge Mounting Screw ¼-20 x 1” 316 Grade 316 Stainless Steel

3.4 Housing Mounting Anchors ¼ - 20 x 1 ¾ Grade 316 Stainless Steel

3.5 Filter Media

1.Mirafi® FW300 geotextile is composed of high-tenacity monofilament polypropylene yarns, which are woven into a stable network such that the yarns retain their relative position.

CBR Puncture Strength	ASTM D6241	lbs (N)	1250 (5563)
Apparent Opening Size (AOS) ¹	ASTM D4751	U.S. Sieve (mm)	30 (0.60)
Percent Open Area	COE-02215	%	8
Permittivity	ASTM D4491	sec-1	1.5
Permeability	ASTM D4491	cm/sec	0.13
Flow Rate	ASTM D4491	(gal/min/ft ²) l/min/m ²	115 (4685)



US PAT #:

7,615,148

JET FILTER SYSTEM LLC
107 NW 1st STREET
CASEY ILLINOIS 62420
800-475-2029

TITLE: **3”DIA. 316SS PRODUCT
SPECIFICATION**

JET Filter components are 100% made in the USA and are compliant with the Buy American Clause.

PART#:

JF3SS